

## Practice - Graphing Quadratic Functions

Find the vertex and intercepts of the following quadratics. Use this information to graph the quadratic.

1)  $y = x^2 - 2x - 8$

2)  $y = x^2 - 2x - 3$

3)  $y = 2x^2 - 12x + 10$

4)  $y = 2x^2 - 12x + 16$

5)  $y = -2x^2 + 12x - 18$

6)  $y = -2x^2 + 12x - 10$

7)  $y = -3x^2 + 24x - 45$

8)  $y = -3x^2 + 12x - 9$

9)  $y = -x^2 + 4x + 55$

10)  $y = -x^2 + 4x - 3$

11)  $y = -x^2 + 6x - 5$

12)  $y = -2x^2 + 16x - 30$

13)  $y = -2x^2 + 16x - 24$

14)  $y = 2x^2 + 4x - 6$

15)  $y = 3x^2 + 12x + 9$

16)  $y = 5x^2 + 30x + 45$

17)  $y = 5x^2 - 40x + 75$

18)  $y = 5x^2 + 20x + 15$

19)  $y = -5x^2 - 60x - 175$

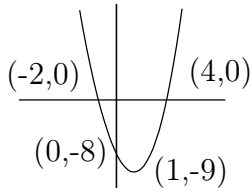
20)  $y = -5x^2 + 20x - 15$



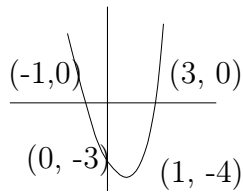
Beginning and Intermediate Algebra by Tyler Wallace is licensed under a Creative Commons Attribution 3.0 Unported License. (<http://creativecommons.org/licenses/by/3.0/>)

Answers - Graphing Quadratic Functions

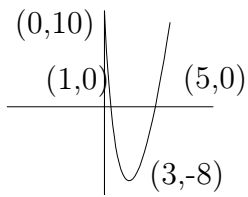
1)



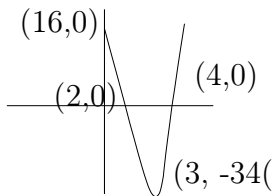
2)



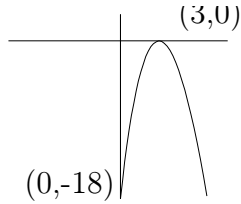
3)



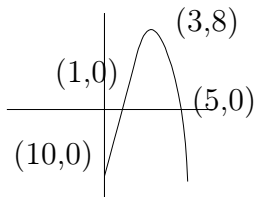
4)



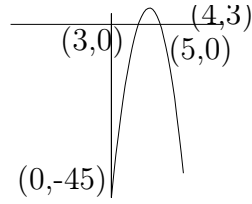
5)



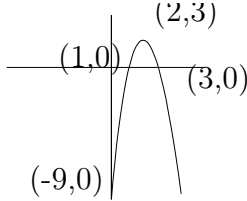
6)



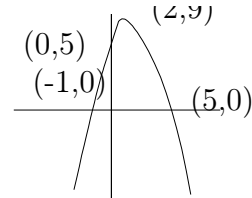
7)



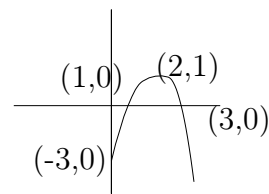
8)



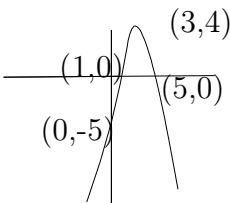
9)



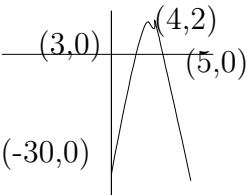
10)



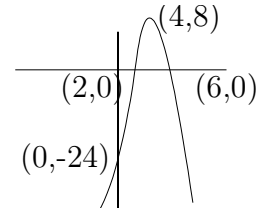
11)



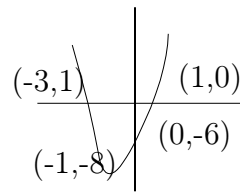
12)



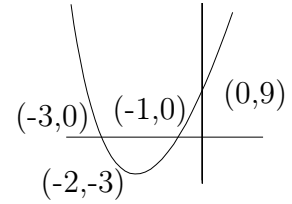
13)



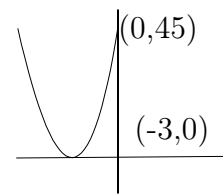
14)



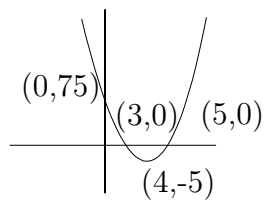
15)



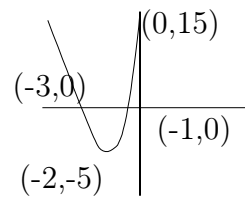
16)



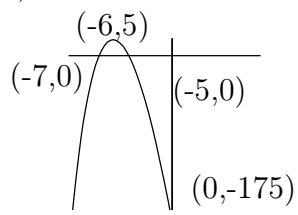
17)



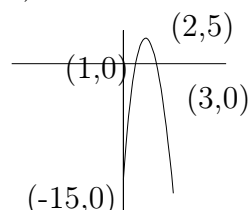
18)



19)



20)



Beginning and Intermediate Algebra by Tyler Wallace is licensed under a Creative Commons Attribution 3.0 Unported License. (<http://creativecommons.org/licenses/by/3.0/>)